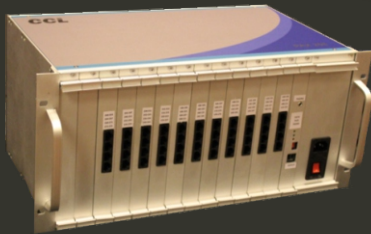


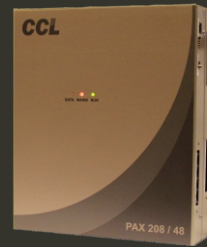
Intercom System for Housing Societies



PAX 208



PAX 208 / 128



PAX 208 / 48



Display for Guard

Features

- CLI - Caller Line Identification
- Battery (12V 7AH) can be connected for operation during power failure
- One or more Display can be connected to Guard's Extension
- Extension to Extension Call
- Call Transfer
- Re-dial
- Conference-8 Party
- Call Waiting on Activation
- Call Parking
- Hot Line
- Auto Call Back from Busy Extension
- Do not Disturb
- Call Privacy
- Alarm Clock
- Reminder Call
- Daily Alarm Time Setting
- Daily Alarm Day Setting
- Panic Activation through code
- Vendor Arrival messages
- Listen to last 10 Missed Call numbers

- Listen to last 10 Received numbers
- Listen to last 10 Dialed numbers
- Denied / Allow List
- Call Forward when Busy
- Call Forwarding
- Follow Me
- Change Personnel Password
- Extension Busy Override
- Call Interrupt
- Call Pick-up of same group
- Call Pick-up Particular
- Visitor Double Check
- Own Extension Port number / Flexible number Listen
- Chairman's Message Listen
 - Extension can listen to the notices recorded by society committee member by dialing a code.
 - Total 5 messages can be stored.
- Message Announce or Broadcast
 - The messages recorded can either be announced on lifting the handset by extensions or can be broadcasted to all extensions.
- Security Watchdog Alert

Hardware Structure

- Extension cards are of 16 Lines and 8 Lines
- Three type of basic cabinets: 48 Lines, 128 Lines and 208 Lines
- Up to 8 Display units for Guard can be connected
- Three type of SMPS cards: For 48 Lines, 128 Lines & 208 Lines
- Up to 7 Basic cabinets can be connected to each other through a Master Exchange in order to expand beyond 208 Lines.
- Maximum Capacity: 1408 Extensions

Dimensions of Product

Model	Length (Cm)	Width (Cm)	Height (Cm)
PAX 208	48.5	29	22
PAX 208 / 128	25	15	44.5
PAX 208 / 48	23.5	10	28
Display for Guard	20	3	7

Copper Connections Limited

B-221, Okhla Industrial Area, Phase-1, New Delhi-110020. Ph: +91-11-40625543
 Email: cclmailcl@gmail.com Website: www.copperconnections.com